



Vibrating Grizzly Feeders

Trio's Heavy Duty Vibrating Grizzly Feeders have been designed with more than twenty-five years of operating knowledge of vibrating equipment. Manufactured in a modern facility under the direction of



46" x 16' Vibrating Feeder After Assembly

an experienced engineering staff, these units are built for professional quarry and recycling operations. The feeders are available in seven standard lengths and widths and a variety of custom sizes.



52" x 20' Scalping Unit

The amplitude and motion come from large, twin shaft eccentric heads that utilize extra large bearing assemblies designed to ensure long operating life and maintenance ease. The feeders are ideal for removing oversize rock and ore from feed material before primary crushing equipment. They are also well suited for stand alone operation in scalping and screening applications.

Specifications

- Welded, stress-relieved steel box
- Bolt-on abrasion resistant liners
- Outboard front spring mountings
- Welded spring supports
- Unbalanced, counter-rotating timed vibrator shafts
- Spherical, self-aligning roller bearings
- Bolted vibrator assembly
- Timing gear adjustment for variable feeder throw
- Removable, bolted grizzly section
- Fabricated, tapered grizzly bars
- Pivoting motor base
- Oil sight gauge

Applications

- Hard Rock Crushing*
- Screening*
- Scalping*
- Recycling*

Models/Sizes

- 40" x 12'*
- 40" x 16'*
- 46" x 16'*
- 46" x 20'*
- 52" x 20'*
- 52" x 24'*
- 64" x 24'*

Other Considerations

- Heavy Duty Fabrication*
- One Year Warranty*
- Off-the-shelf parts*
- Exceptional Quality*

Michigan Aggregate Machinery

P.O. Box 838, Northville, Michigan, 48167

Tel: 248-349-8887 Fax: 248-349-6091

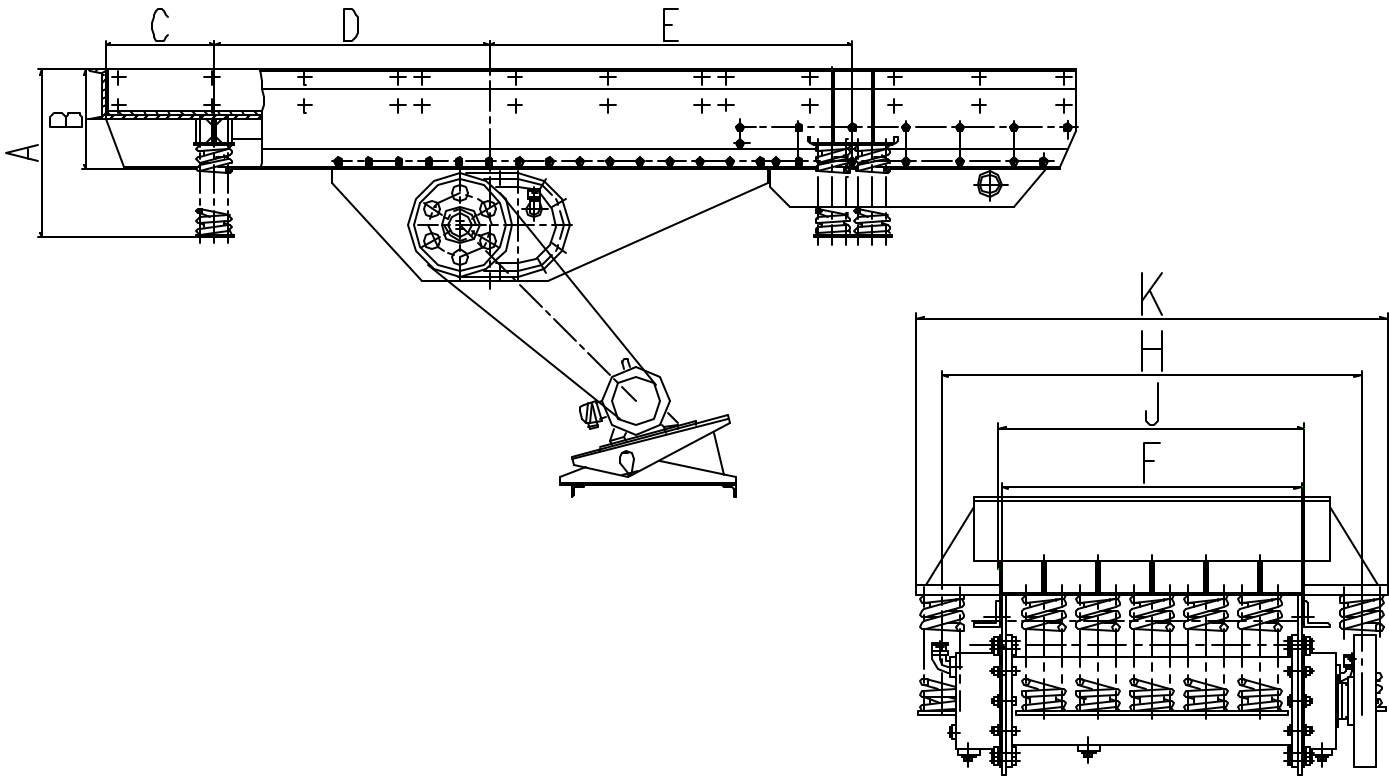
Website: www.michagg.com Email: sales@michagg.com



Vibrating Grizzly Feeders

Size (mm)	Bearing Size	Weight lbs (kg)	Power HP (KW)	Operating Speed (RPM)	Production Capacity (TPH)	Maximum Feed Size
40" x 12' (1016 x 3660)	90 mm	8,350 (3,790)	20 (15)	500 to 800	150 to 350	24"
40" x 16' (1016 x 4877)	90 mm	10,900 (4,950)	25 (20)	500 to 800	200 to 350	24"
46" x 16' (1168 x 4877)	90 mm	11,700 (5,300)	25 (20)	500 to 800	200 to 450	24"
46" x 20' (1168 x 6096)	90 mm	14,400 (6,530)	30 (22)	500 to 800	250 to 500	24"
52" x 20' (1320 x 6096)	110 mm	17,500 (7,950)	40 (30)	500 to 800	300 to 500	36"
52" x 24' (1320 x 7315)	130 mm	21,800 (9,890)	50 (37)	500 to 800	350 to 550	36"
64" x 24' (1626 x 7315)	130 mm	28,250 (12,850)	60 (45)	500 to 800	400 to 700	42"

NOTE: Feeder capacity varies with installed slope of machine and feed hopper configuration.



Size (mm)	A	B	C	D	E	F	H	J	K
40" x 12'	33	20	20	32	63	39	60	40	59
40" x 16'	33	20	21	54	72	39	60	40	68
46" x 16'	33	20	21	54	72	45	64	46	72
46" x 20'	42	28	21	61	107	45	64	46	72
52" x 20'	43	28	20	61	107	51	71	52	79
52" x 24'	43	28	20	66	117	51	71	52	79
64" x 24'	45	28	20	66	117	63	83	64	91